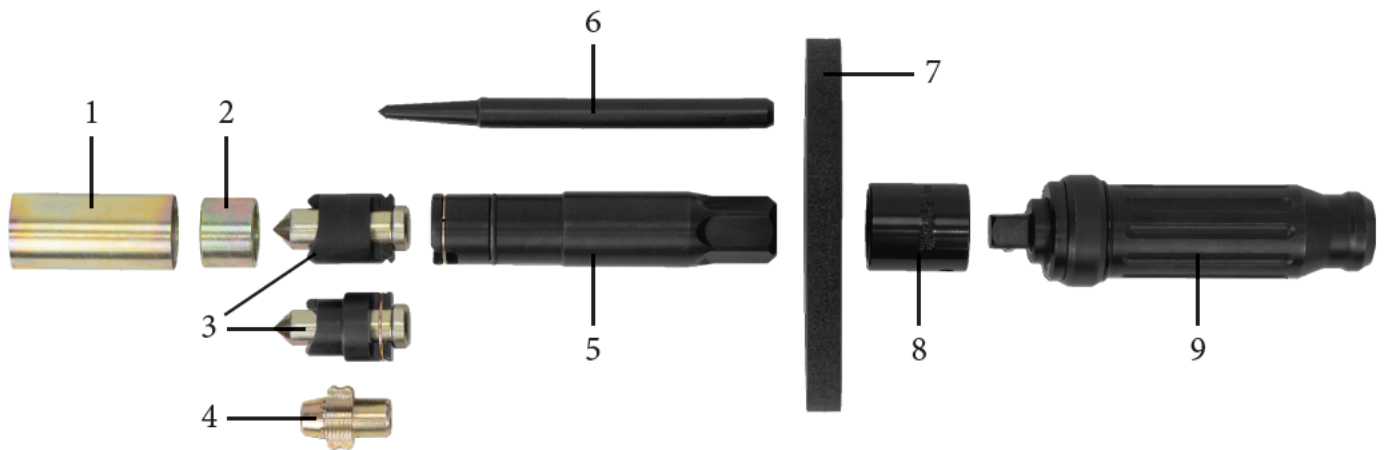


Universal Locking Wheel Nut Removal Kit

This universal locking wheel nut remover kit contains two sizes of impact cutting blades to fit most common locking wheel nuts by cutting into the outer rim, as well as a set of double-sided blades for moulding in to the socket key shape directly.

This set provides a removal solution to a wide range of socket sizes, types, profiles and materials including those with spinning collars.

- Additional blade packs available.
- Universally compatible tool.
- Compatible with air tools.



Contents:

1. Outer Shroud
2. Inner Shroud
3. Two Blade & Mandrel
4. Three Double-Sided Moulding Blades

5. Main Unit
6. Centre Punch
7. Hand Protection Guard
8. 1/2" Impact Socket (24mm Hex)
9. Impact Driver

Warranty: All parts classed as consumable and not covered by warranty as they are expected to take wear and tear to the point of failure during regular use.

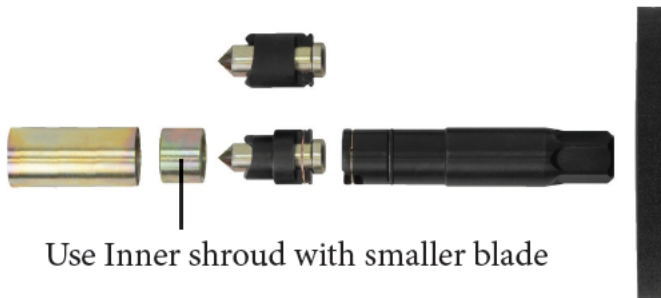
Instructions

1. Use the centre punch to place a guide marker in the middle of the locking wheel nut.

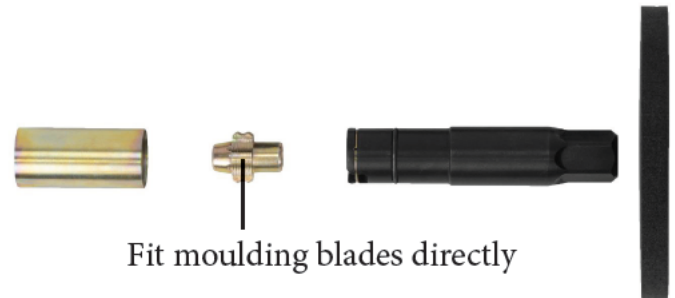
- If the punch successfully indents the locking wheel nut go ahead with the **blade & mandrel instructions**.
- If the punch fails to make an indent on hardened nuts, proceed with **moulding blade instructions**.



Blade & Mandrel Assembly



Moulding Blade Assembly



2. Align the assembled unit with the wheel nut using the punch marker made earlier and hammer the back of the main unit.

- Continue to hammer until the impact blades cut into the sides of the socket enough to gain grip.
- Or until the moulding blades have pressed in to the key profile enough to gain grip.



3. Remove the hand guard and fit the supplied socket to allow for removal with an air tool.

- Ensure the blades are making firm contact with the indents made in step 2.
- Slowly increase torque from a lower setting until the wheel nut begins to loosen.
- Ensure a firm connection, slipping may cause damage.



4. If an air tool is not available you can use the impact driver attachment and a hammer. (Can use any 1/2" drive tool)

Fit the impact driver to the socket, the hand guard to the driver, and position the blades over the wheel nut.

- Apply pressure to the nut to create a firm connection and twist the handle.
- Repeatedly impact the driver until nut is loosened.

